

Produced and process water

in aluminium industry involve particular problems:

- Settleable light and heavy materials in micro-size range
- Light liquids in form of perlube-oils with metal shares
- Organic load



awas
water and waste water systems



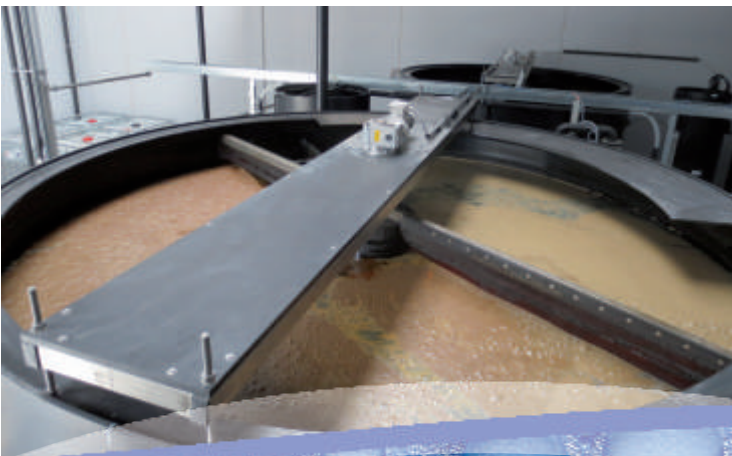
Our services for you working in the aluminium industry:

- technical consulting and design
- laboratory analytical accompaniment
- tests and pilot projects
- construction, delivery and installation
- service and maintenance



awas

water and waste water systems



awas International GmbH

Schulstraße 24
D-57234 Wilnsdorf

Tel.: +49 2737 / 9850-0
Fax: +49 2737 / 9850-50

www.awas.de
info@awas.de



PROCESS WATER TREATMENT

PROCESS WATER

The **AWAS-sludge-separator** may consist of an existing concrete basin in which an AWAS "round a round" helical wall, depending on the inlet flow, is installed, causing centrifugal and centripetal flow. Thereby an optimal separation takes place which boosts light and deposits heavy materials.

The oils in the aluminium industry have high viscosities, weights and special ingredients.

Therefore **AWAS** developed a **special perlube-oil-separation**, initiating the oil directly into an oil tank.

An emulsion splitting, full stream saturating **AWAS-nano-flotation** with proven separation-chemistry guarantees a neutralization of metal precipitation together with germ reduction, meaning clear, dischargeable effluent water.

